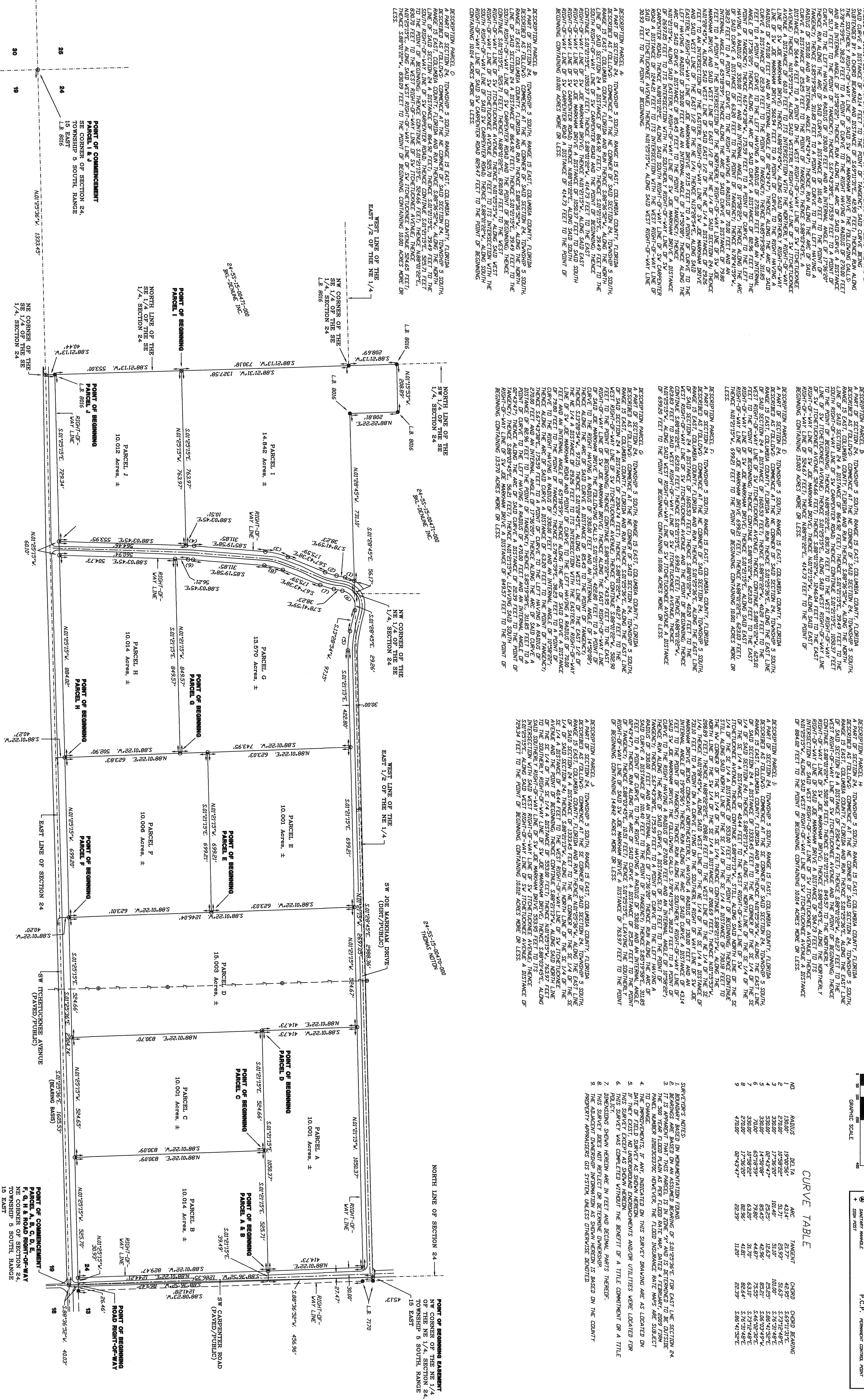


'SHIRLEY GOROSPE TRACT' A SUBDIVISION OF LAND IN: SECTION 24, TOWNSHIP 5 SOUTH, RANGE 15 EAST, COLUMBIA COUNTY, FLORIDA



DESCRIPTION PARCEL A, TOWNSHIP 5 SOUTH, RANGE 15 EAST, COLUMBIA COUNTY, FLORIDA. A PART OF SECTION 24, TOWNSHIP 5 SOUTH, RANGE 15 EAST, COLUMBIA COUNTY, FLORIDA, COMMENCE AT THE NE CORNER OF SAID SECTION 24, TOWNSHIP 5 SOUTH, RANGE 15 EAST, COLUMBIA COUNTY, FLORIDA, AND RUN THENCE S89°56'24\"

DESCRIPTION PARCEL B, TOWNSHIP 5 SOUTH, RANGE 15 EAST, COLUMBIA COUNTY, FLORIDA. A PART OF SECTION 24, TOWNSHIP 5 SOUTH, RANGE 15 EAST, COLUMBIA COUNTY, FLORIDA, COMMENCE AT THE NE CORNER OF SAID SECTION 24, TOWNSHIP 5 SOUTH, RANGE 15 EAST, COLUMBIA COUNTY, FLORIDA, AND RUN THENCE S89°56'24\"

DESCRIPTION PARCEL C, TOWNSHIP 5 SOUTH, RANGE 15 EAST, COLUMBIA COUNTY, FLORIDA. A PART OF SECTION 24, TOWNSHIP 5 SOUTH, RANGE 15 EAST, COLUMBIA COUNTY, FLORIDA, COMMENCE AT THE NE CORNER OF SAID SECTION 24, TOWNSHIP 5 SOUTH, RANGE 15 EAST, COLUMBIA COUNTY, FLORIDA, AND RUN THENCE S89°56'24\"

DESCRIPTION PARCEL D, TOWNSHIP 5 SOUTH, RANGE 15 EAST, COLUMBIA COUNTY, FLORIDA. A PART OF SECTION 24, TOWNSHIP 5 SOUTH, RANGE 15 EAST, COLUMBIA COUNTY, FLORIDA, COMMENCE AT THE NE CORNER OF SAID SECTION 24, TOWNSHIP 5 SOUTH, RANGE 15 EAST, COLUMBIA COUNTY, FLORIDA, AND RUN THENCE S89°56'24\"

DESCRIPTION PARCEL E, TOWNSHIP 5 SOUTH, RANGE 15 EAST, COLUMBIA COUNTY, FLORIDA. A PART OF SECTION 24, TOWNSHIP 5 SOUTH, RANGE 15 EAST, COLUMBIA COUNTY, FLORIDA, COMMENCE AT THE NE CORNER OF SAID SECTION 24, TOWNSHIP 5 SOUTH, RANGE 15 EAST, COLUMBIA COUNTY, FLORIDA, AND RUN THENCE S89°56'24\"

DESCRIPTION PARCEL F, TOWNSHIP 5 SOUTH, RANGE 15 EAST, COLUMBIA COUNTY, FLORIDA. A PART OF SECTION 24, TOWNSHIP 5 SOUTH, RANGE 15 EAST, COLUMBIA COUNTY, FLORIDA, COMMENCE AT THE NE CORNER OF SAID SECTION 24, TOWNSHIP 5 SOUTH, RANGE 15 EAST, COLUMBIA COUNTY, FLORIDA, AND RUN THENCE S89°56'24\"

DESCRIPTION PARCEL G, TOWNSHIP 5 SOUTH, RANGE 15 EAST, COLUMBIA COUNTY, FLORIDA. A PART OF SECTION 24, TOWNSHIP 5 SOUTH, RANGE 15 EAST, COLUMBIA COUNTY, FLORIDA, COMMENCE AT THE NE CORNER OF SAID SECTION 24, TOWNSHIP 5 SOUTH, RANGE 15 EAST, COLUMBIA COUNTY, FLORIDA, AND RUN THENCE S89°56'24\"

DESCRIPTION PARCEL H, TOWNSHIP 5 SOUTH, RANGE 15 EAST, COLUMBIA COUNTY, FLORIDA. A PART OF SECTION 24, TOWNSHIP 5 SOUTH, RANGE 15 EAST, COLUMBIA COUNTY, FLORIDA, COMMENCE AT THE NE CORNER OF SAID SECTION 24, TOWNSHIP 5 SOUTH, RANGE 15 EAST, COLUMBIA COUNTY, FLORIDA, AND RUN THENCE S89°56'24\"

DESCRIPTION PARCEL I, TOWNSHIP 5 SOUTH, RANGE 15 EAST, COLUMBIA COUNTY, FLORIDA. A PART OF SECTION 24, TOWNSHIP 5 SOUTH, RANGE 15 EAST, COLUMBIA COUNTY, FLORIDA, COMMENCE AT THE NE CORNER OF SAID SECTION 24, TOWNSHIP 5 SOUTH, RANGE 15 EAST, COLUMBIA COUNTY, FLORIDA, AND RUN THENCE S89°56'24\"

DESCRIPTION PARCEL J, TOWNSHIP 5 SOUTH, RANGE 15 EAST, COLUMBIA COUNTY, FLORIDA. A PART OF SECTION 24, TOWNSHIP 5 SOUTH, RANGE 15 EAST, COLUMBIA COUNTY, FLORIDA, COMMENCE AT THE NE CORNER OF SAID SECTION 24, TOWNSHIP 5 SOUTH, RANGE 15 EAST, COLUMBIA COUNTY, FLORIDA, AND RUN THENCE S89°56'24\"

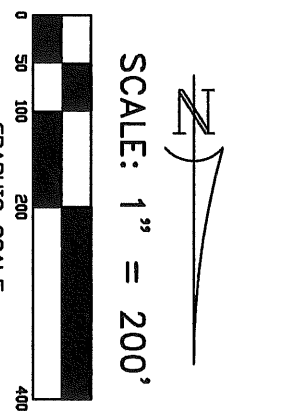
DESCRIPTION PARCEL K, TOWNSHIP 5 SOUTH, RANGE 15 EAST, COLUMBIA COUNTY, FLORIDA. A PART OF SECTION 24, TOWNSHIP 5 SOUTH, RANGE 15 EAST, COLUMBIA COUNTY, FLORIDA, COMMENCE AT THE NE CORNER OF SAID SECTION 24, TOWNSHIP 5 SOUTH, RANGE 15 EAST, COLUMBIA COUNTY, FLORIDA, AND RUN THENCE S89°56'24\"

DESCRIPTION PARCEL L, TOWNSHIP 5 SOUTH, RANGE 15 EAST, COLUMBIA COUNTY, FLORIDA. A PART OF SECTION 24, TOWNSHIP 5 SOUTH, RANGE 15 EAST, COLUMBIA COUNTY, FLORIDA, COMMENCE AT THE NE CORNER OF SAID SECTION 24, TOWNSHIP 5 SOUTH, RANGE 15 EAST, COLUMBIA COUNTY, FLORIDA, AND RUN THENCE S89°56'24\"

DESCRIPTION PARCEL M, TOWNSHIP 5 SOUTH, RANGE 15 EAST, COLUMBIA COUNTY, FLORIDA. A PART OF SECTION 24, TOWNSHIP 5 SOUTH, RANGE 15 EAST, COLUMBIA COUNTY, FLORIDA, COMMENCE AT THE NE CORNER OF SAID SECTION 24, TOWNSHIP 5 SOUTH, RANGE 15 EAST, COLUMBIA COUNTY, FLORIDA, AND RUN THENCE S89°56'24\"

DESCRIPTION PARCEL N, TOWNSHIP 5 SOUTH, RANGE 15 EAST, COLUMBIA COUNTY, FLORIDA. A PART OF SECTION 24, TOWNSHIP 5 SOUTH, RANGE 15 EAST, COLUMBIA COUNTY, FLORIDA, COMMENCE AT THE NE CORNER OF SAID SECTION 24, TOWNSHIP 5 SOUTH, RANGE 15 EAST, COLUMBIA COUNTY, FLORIDA, AND RUN THENCE S89°56'24\"

DESCRIPTION PARCEL O, TOWNSHIP 5 SOUTH, RANGE 15 EAST, COLUMBIA COUNTY, FLORIDA. A PART OF SECTION 24, TOWNSHIP 5 SOUTH, RANGE 15 EAST, COLUMBIA COUNTY, FLORIDA, COMMENCE AT THE NE CORNER OF SAID SECTION 24, TOWNSHIP 5 SOUTH, RANGE 15 EAST, COLUMBIA COUNTY, FLORIDA, AND RUN THENCE S89°56'24\"



SCALE: 1" = 200'

CURVE TABLE

NO.	RADIUS	DELTA	ARC	TANGENT	CHORD	CHORD BEARING
1	130.00	190°05'	43.14	21.77	42.59	S59°11'31\"
2	170.00	137°50'	51.07	31.07	57.76	S76°31'49\"
3	230.00	102°43'47\"	68.25	42.63	78.25	S66°41'32\"
4	330.00	69°56'37\"	95.89	58.25	108.25	S58°02'37\"
5	470.00	47°08'22\"	132.00	81.70	147.00	S47°12'48\"
6	650.00	31°27'00\"	192.50	118.00	210.00	S31°27'00\"
7	890.00	22°54'11\"	258.00	162.50	285.00	S22°54'11\"
8	1200.00	16°43'47\"	354.00	225.00	390.00	S16°43'47\"

S Y M B O L L E G E N D :

1" CONC. CONCRETE MONUMENT FOUND	5	CONCRETE
1" CONC. CONCRETE MONUMENT SET	6	ELECTRIC LINES
1" CONC. CONCRETE MONUMENT SET	7	WATER LINES
1" CONC. CONCRETE MONUMENT SET	8	SEWER LINES
1" CONC. CONCRETE MONUMENT SET	9	ROAD LINE
1" CONC. CONCRETE MONUMENT SET	10	SECTION LINE
1" CONC. CONCRETE MONUMENT SET	11	AS PER A PLAN OF RECORD
1" CONC. CONCRETE MONUMENT SET	12	AS PER CALCULATIONS
1" CONC. CONCRETE MONUMENT SET	13	FIELD
1" CONC. CONCRETE MONUMENT SET	14	P.R.M. PERMANENT MONUMENT
1" CONC. CONCRETE MONUMENT SET	15	P.C.P. PERMANENT CONCRETE MONUMENT

CERTIFIED TO:
SUSAN CURTIS
LISA GOROSPE, TRUSTEES
SHIRLEY ANN GOROSPE LIVING TRUST

SURVEYOR'S CERTIFICATION
I HEREBY CERTIFY THAT THIS SURVEY WAS MADE UNDER MY RESPONSIBLE CHARGE AND MEETS THE MINIMUM TECHNICAL STANDARDS AS SET FORTH BY THE FLORIDA BOARD OF PROFESSIONAL SURVEYORS AND MAPPERS IN CHAPTER 5J-17, FLORIDA ADMINISTRATIVE CODE, PURSUANT TO SECTION 472.027, FLORIDA STATUTES.

09/21/21 FIELD SURVEY DATE
01/20/2022 DRAWING DATE

L. SCOTT BRITT, P.S.M.
REGISTERED PROFESSIONAL SURVEYOR
NO. 11115

BRITT SURVEYING & MAPPING, LLC
LAND SURVEYORS AND MAPPERS, L.B. # 8016
1438 SW MAIN BLVD,
LAKE CITY, FLORIDA, 32025
TELEPHONE: (386) 752-7163 FAX: (386) 752-5573 www.brittsurveying.com